

NES CONTROL ONE software manual

NES Control One software is designed to control and monitor NES Nová Dubnica devices communicating via MODBUS-RTU protocol via serial interface or USB port. The software is designed for computers (referred as „PC“) with Windows XP and above.

Installation

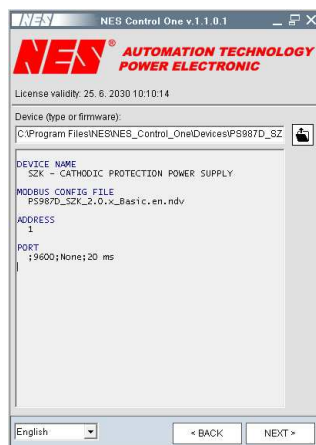
1. Insert the installation media into the PC
2. Run the "NES_Control_One_Setup.exe" program and follow the wizard. If you already have a program installed, the data will be overwritten.


First run and license validation

1. Start "NES Control One". It is located in the Windows "START" menu under "NES Nova Dubnica s.r.o."
2. Read the license terms. If you agree with them, confirm them. Press "Next".
3. Program requires a license key tied to the hardware components. A license key is located on the supplied installation media. If the program was not obtained on the installation media, follow step 4, otherwise continue with step 6.
4. The license can be obtained by sending the generated key. Press the "Send email" button or copy the generated key with the name and send an email to obchod@nes.sk. License verification is within 24 hours of the business day.
5. After pressing the "Edit key" button, enter the received license key in the "License key" field. Then confirm by pressing the "Save key".
6. If the license is correct, the text "License key in the system" or "License key on storage (USB stick)" will appear in the "License key" field. You can then continue by pressing the "NEXT" button.

Program control

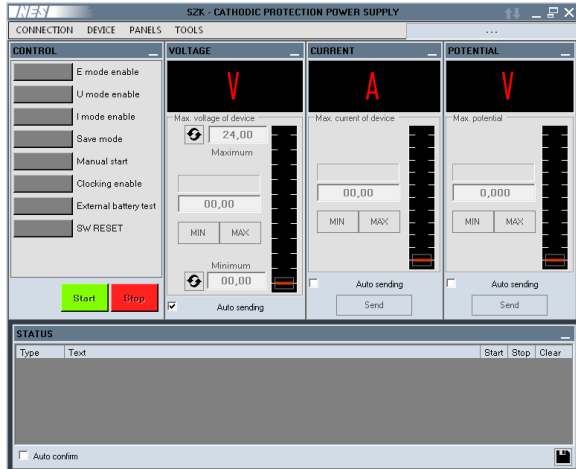
Run program "NES Control One" if it is not running. Located in Windows "START" menu under "NES Nova Dubnica s.r.o."



Button  retrieve settings for a specific device. The file names are firmware or device-specific. When loading files, the language setting at the bottom of the program also determines.

With the correct file format, the basic information describing the device name, the MODBUS-RTU protocol configuration file, the device address, and the port settings will be displayed. The last two parameters are set in the next program section.

Press "Next" to display the communication program itself. Its shape, number of panels and their layout depend on the type of device.

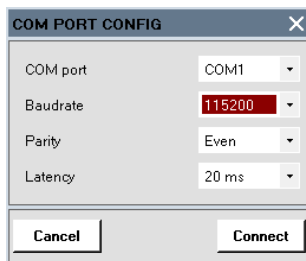


Program settings are at the top of the program:

- **CONNECTION** - set the device address, PC communication port and establish a connection.
- **DEVICE** - load / save settings from / to device
- **PANELS** - show / hide panels
- **TOOLS** - set color theme, save panel layout, theme and port settings

Create a connection

The default settings are computer and device link parameters. The setting is in the "CONNECTION ► Setting" menu. Speed and parity parameters must match the settings on the device.



COM port

the PC communication port used to connect it to the device. The COM port number on the PC has nothing to do with the COM port number on the device.

Baudrate

Communication speed. Higher speed is limited by the length of the jumper wire. The parameter must match the setting on the device.

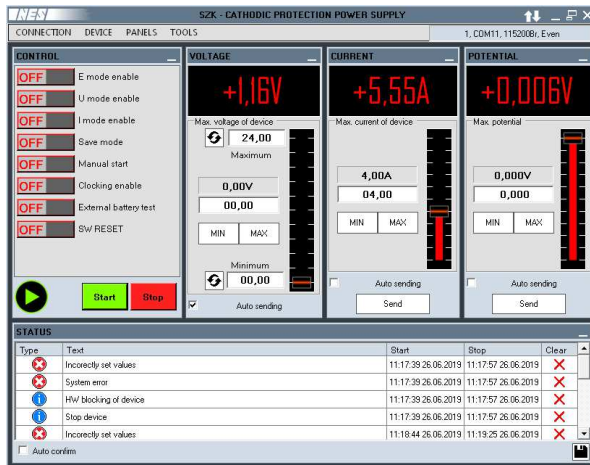
Parity


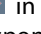

The parity bit is designed for simple error detection. The parameter must match the setting on the device.

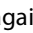
Latency

Communication delay for non-native serial interface or slow PC.

The address setting is directly in the "CONNECTION" menu. The parameter must match the setting on the device. Once all parameters have been set, a connection can be made in the "CONNECTION ►" Connect.



At the top right of the program, there is information about port settings. White arrows  indicate a good connection. There is one red  in communication errors. If the device does not respond, one arrow is gray .

Individual panels can be edited, scrolled, or hidden with the button . The panels are displayed again in the "PANELS" menu. In the "TOOLS" menu, the current panel layout and color theme can be saved.

It is also possible to save the setting when closing the program.

The connection is canceled in the "CONNECTION ► Disconnect" menu.

NES Nová Dubnica s.r.o.

M. Gorkého 820/27
SK-01851 Nová Dubnica
Slovakia